

WP4. Scientific Combination Service Pre-processing for Combination

Yomin Jean

Astronomical Institute, University of Bern

EGSIEM General Assembly

University of Bern

February 08 – 09, 2018

Introduction

- In **WP4 at Univeristy of Bern**
 - Scientific Combination Service:
Combination of GRACE Monthly Gravity Field Solutions
- Contents
 - **Pre-processing (1): Signal and Noise Assessment**
 - **Pre-processing (2): Weights for Combination**

GRACE Monthly Gravity Field Solutions (L2) referred to the *EGSiEM Processing Standard*:

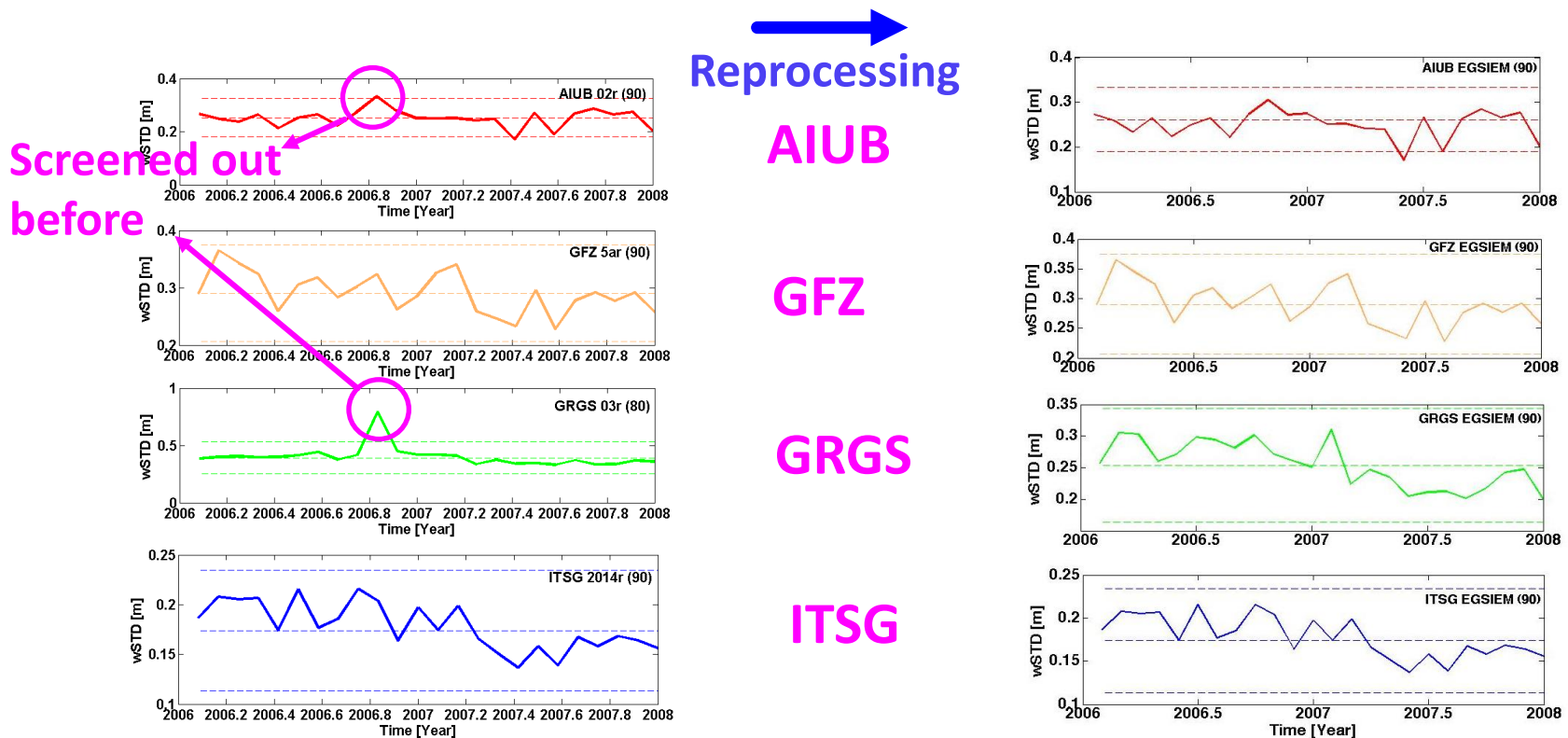
Analysis Center	Max. Degree	Period
AIUB	90 (Reprocessed)	2006/01 – 2007/12 (2 years)
GFZ	90	
GRGS	<i>80 → 90</i>	
ITSG	90	

FTP Server:

<http://dl.aiub.unibe.ch/data/egsiem/private/Gravity/>

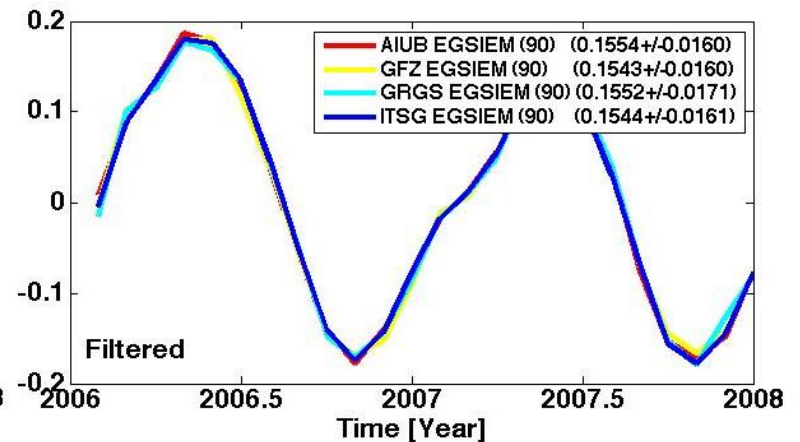
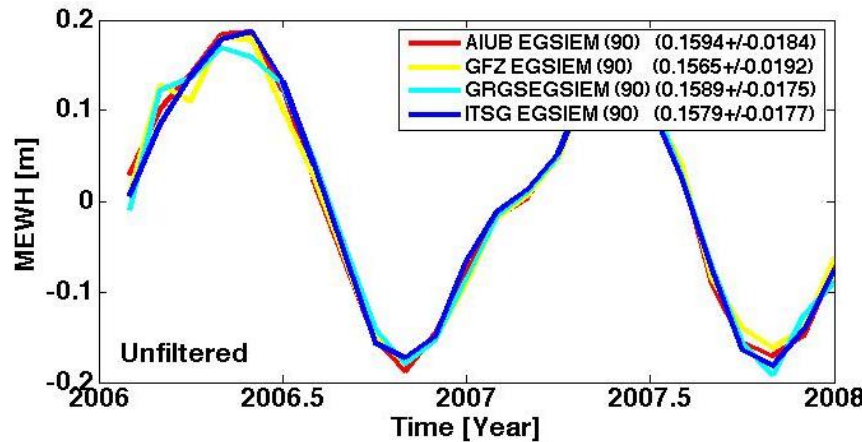
Preprocessing (1): Scaling and Screening

- Rescaling of *Earth radius* and *Gravitational parameter*
- Correction of **C20 bias** (w.r.t. Tide-free system)
- Screening of outliers
 - Criterion: Median + 3MAD using *wSTD* over the oceans (Quality Measure)

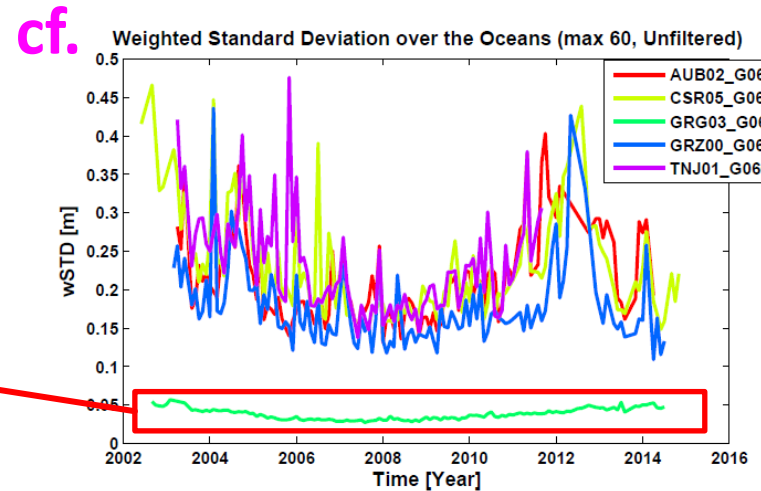
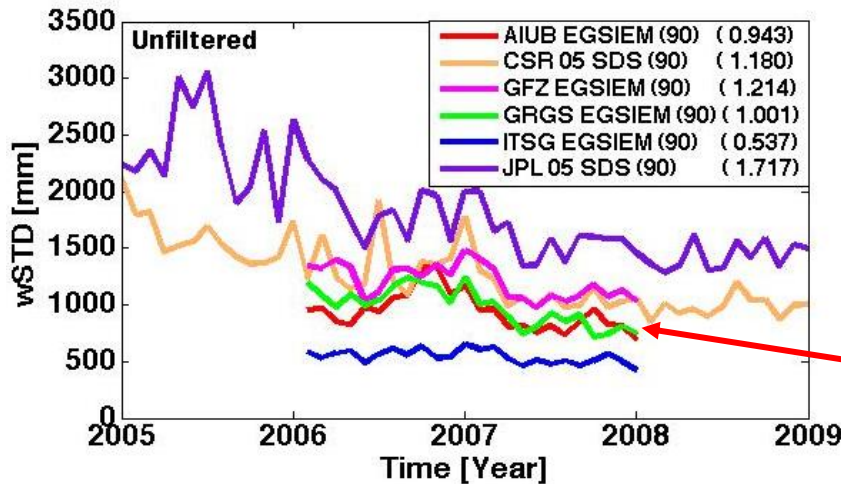


Preprocessing (2): Signal and Noise Comparison

MEWH (Amazon River Basin)

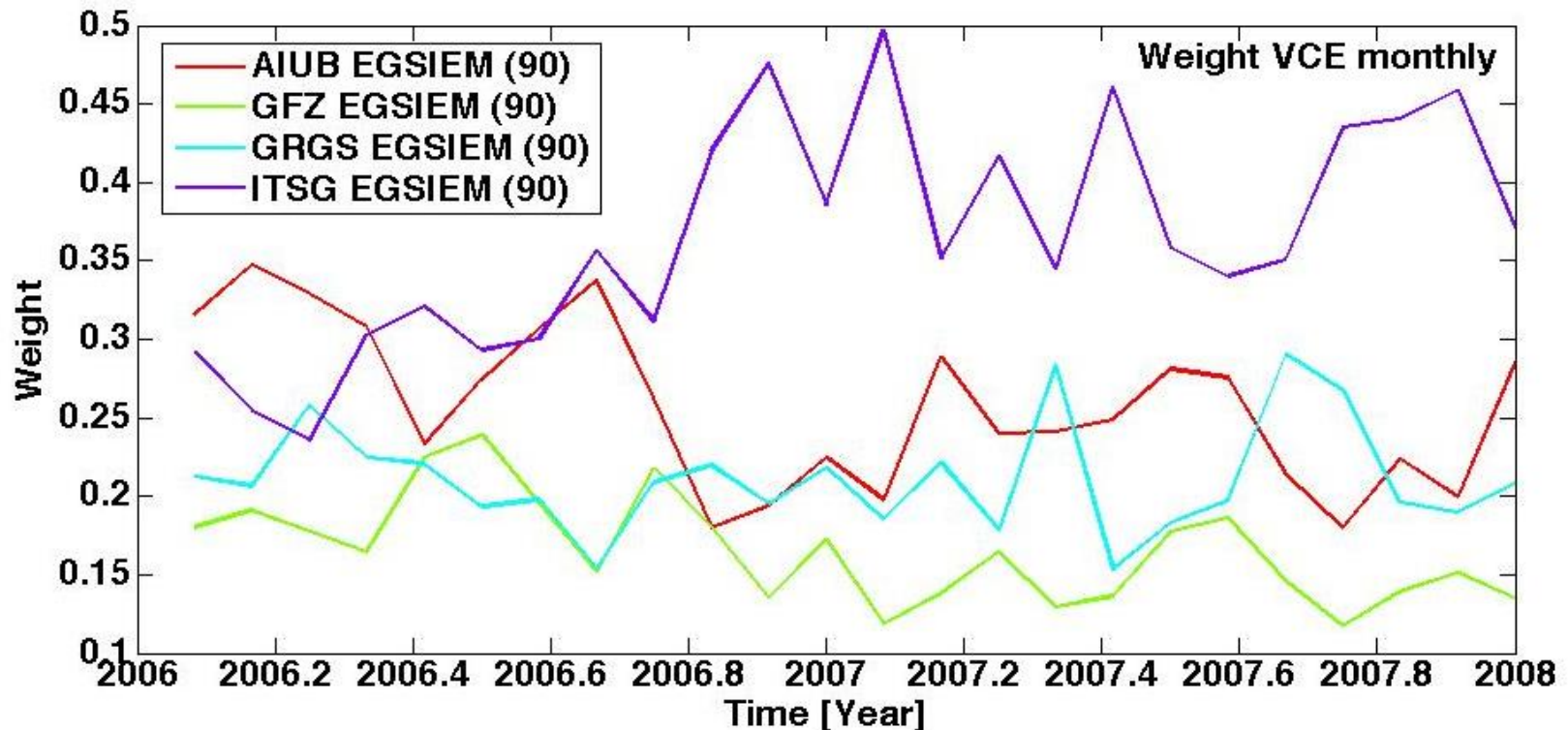


wSTD Oceans

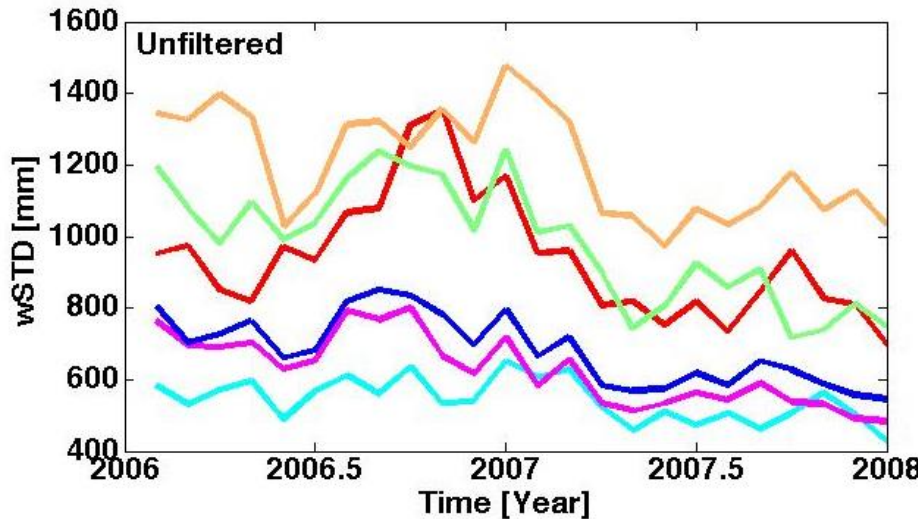


Weights

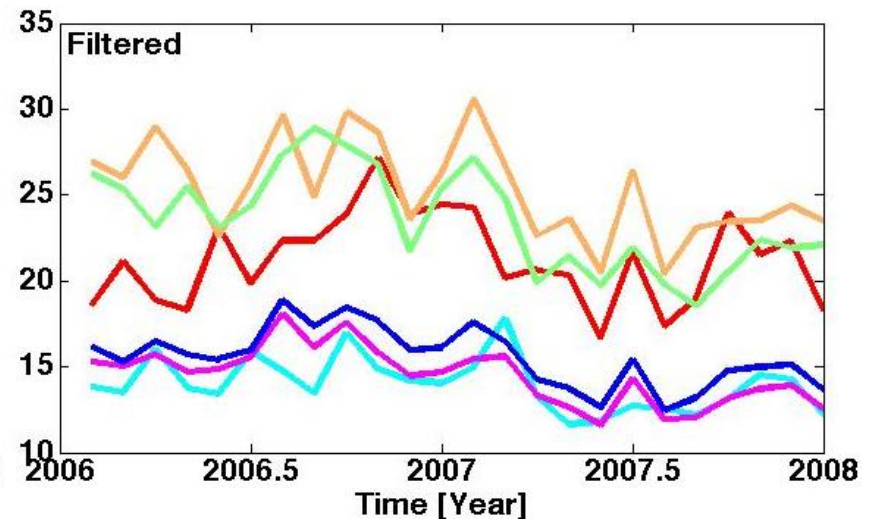
- Weights from *iterative* process using the *Variance Component Estimation (VCE)* method



Combined Solutions: wSTD over Oceans



AIUB EGSIM (90)	(0.943)
GFZ EGSIM (90)	(1.214)
GRGS EGSIM (90)	(1.002)
ITSG EGSIM (90)	(0.537)
wMean C. EGSIM (90)	(0.621)
Mean C. EGSIM (90)	(0.673)



AIUB EGSIM (90)	(0.021)
GFZ EGSIM (90)	(0.025)
GRGS EGSIM (90)	(0.023)
ITSG EGSIM (90)	(0.014)
wMean C. EGSIM (90)	(0.015)
Mean C. EGSIM (90)	(0.016)